



The Birdie

Largest lot in the neighborhood!

Lot #1



4



3

Main Floor: 2,325 sq.ft.

Lower Level: 975 sq.ft.

Total Finished: 3,300



CAD drawings by designer, Janel Joppie

Home Highlights

- Largest property in Lakeside
- Culdesac lot
- Extra parking with longer driveway
- Beautiful curb appeal
- Spacious three-stall garage

Main-Level Features

- Large Entry with wainscoting
- Great Room with 10'6" ceilings
- Fireplace and built-ins
- Large Andersen windows with golf course view
- Main-floor guest bedroom with full bathroom

Kitchen

- Custom-built cabinetry throughout
- Large gathering island
- Walk-through pantry
- Beverage area

Family Entry + Organization

- Built-in bench w/ Hooks
- Shoe storage
- Walk-in closet
- Home management workspace

Primary Suite

- Large windows
- His-and-hers custom vanities
- Custom tiled shower
- Private toilet room
- His-and-hers walk-in closets
- Convenient laundry room access

Finished Lower Level

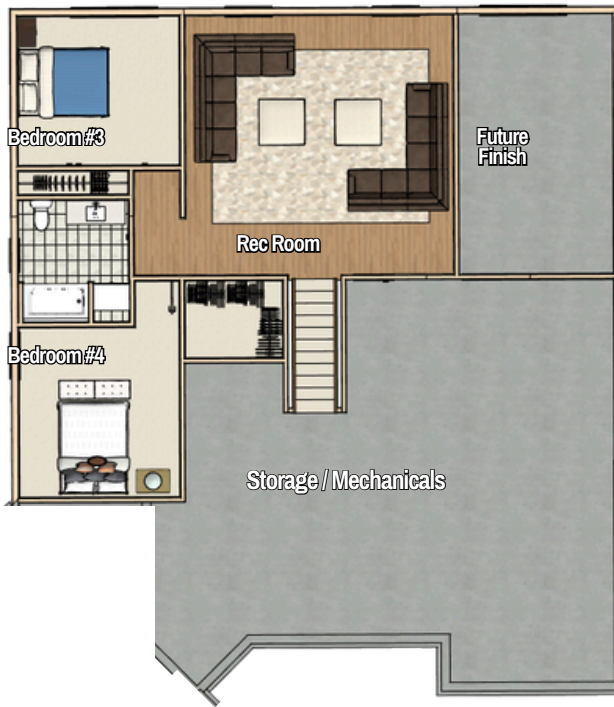
- Two additional bedrooms
- Full bath w/ custom shower
- Oversized recreation room
- Sliders to patio
- Future Finish: Game Area etc.



BuildandDesign.net

2926





Business Office

BUILDER & DESIGNER

Gary Byker

Janel Joppie

HOMES
BY
Gary Byker

"An Unparalleled collaboration
in the building industry"
-Grand Rapids Magazine

Selections Studio



Builder
Gary Byker
 Bykerbuilder@comcast.net
 616-292-1398

